



MIM SurePlan™ LiverY90

A Comprehensive Solution for Y90



The End of Not Knowing

Why MIM?

MIM SurePlan LiverY90 provides timesaving tools for liver and tumor segmentation, deformable registration, and post-treatment dosimetry using Y90-PET and Bremsstrahlung SPECT.

Use it alone, or integrate MIM SurePlan LiverY90 into the larger MIM ecosystem and take advantage of a comprehensive, vendor-neutral platform for Nuclear Medicine processing and review.

Now you can read PET/CT, PET/MR, SPECT/CT, and planar Nuclear Medicine images from any major manufacturer, all in one system.

KEY FEATURES



AI-enabled organ segmentation for liver and lungs



Divide liver into lobes or segments



Calculate tumor-to-normal ratio



Calculate liver-lung shunt fraction



Multi-modality rigid and deformable fusion



Post-op dosimetry for Y90-PET and Bremsstrahlung SPECT



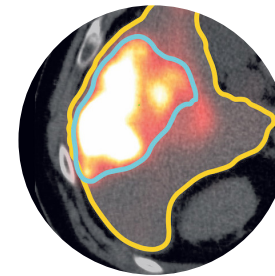
Integrated reporting tools



RECIST and PERCIST tools



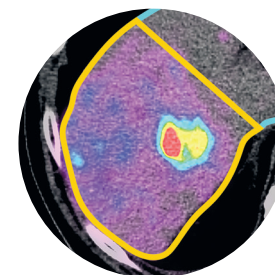
Customizable physician and staff workflows



Pre-Treatment

MIM SurePlan LiverY90 provides timesaving tools for liver and tumor volume segmentation, deformable registration, and comparison between pre-treatment images and post-treatment dosimetry.

- **Automatically generate liver volumes** using Contour ProtégéAI+™.
- Minimal to no edits needed, zero click, automatically runs for each new patient CT.
- Easily divide liver into **lobes or segments** to determine target region volumes.
- Rapidly generate **tumor contours** based on any combination of CT/MRI/CBCT/PET/SPECT, using specialized semi-automatic tools.
- Calculate **tumor-to-normal ratio** for both your total tumor volume and individual tumors.
- Planar and SPECT/CT lung shunt calculations.
- Incorporate multiple modalities with rigid and deformable registration.



Post-Y90 Dosimetry

SurePlan provides tools for Yttrium-90 microsphere post-treatment voxel-based dose calculation using PET and SPECT.*

Delivered dose can be compared to follow-up exams with automated tools for therapy response evaluation. The resulting treatment information can then be incorporated into the patient record.

- Dose calculation on both **Y90-PET and Bremsstrahlung SPECT**.
- **Vendor-neutral** dose calculation, resin, and glass.
- Calculate dose using Voxel S Value Kernel Methods, Local Deposition Method, and Local Deposition Method with known activity (SPECT/CT).
- **Combine Y90 dose** with dose from other treatments such as **external beam** radiation therapy.
- Automate therapy response assessment.
- Create information-rich reports with dosimetry and therapy response information.
- Provide **immediate information** for earlier follow-up treatment decisions.

*According to the EANM dosimetry committee series on standard operational procedures from 2021 "Voxel dosimetry is recommended to complement the mean dose approach."



Global Offices



MIM SOFTWARE INC.

World Headquarters

25800 Science Park Drive,
Suite 180
Cleveland, OH 44122

Phone: 866-421-2536
(US/Canada toll-free)

Phone: 216-455-0600

Fax: 216-455-0601

Email: info@mimsoftware.com

MIM SOFTWARE

Beijing Co., Ltd.

Suite 809, Shouxiang
Science Building
No.51 Xueyuan Rd.,
Haidian District
Beijing 100191

北京明维视景医疗软件开发有限公司
地址: 北京市海淀区学院路51号首享科技
大厦809室
邮编100191

Phone: 86-10-82626960

Email: info@mimsoftware.com



MIM SOFTWARE

Brussels BV

Drukpersstraat 4
1000 Brussel
Belgium

MIM Software, a GE HealthCare company, is also represented globally by a network of well-established distributors and agents. Please contact your local MIM Software representative to obtain more information for your region.

© MIM Software Inc.
2024 All Rights Reserved

TD-1212
15 Nov 2024



Emergo Europe
Westervoortsedijk 60
6827 AT Arnhem
The Netherlands



MedEnvoy Switzerland
Gotthardstrasse 28
6302 Zug
Switzerland

