



MIM SurePlan™ LiverY90

# A Comprehensive Solution for Y90



# The End of Not Knowing

Why MIM?

MIM SurePlan LiverY90 provides timesaving tools for liver and tumor segmentation, deformable registration, and post-treatment dosimetry using Y90-PET and Bremsstrahlung SPECT.

Use it alone, or integrate MIM SurePlan LiverY90 into the larger MIM ecosystem and take advantage of a comprehensive, vendor-neutral platform for Nuclear Medicine processing and review.

Now you can read PET/CT, PET/MR, SPECT/CT, and planar Nuclear Medicine images from any major manufacturer, all in one system.

## Key Features



**AI-enabled organ segmentation** for liver and lungs



**Divide** liver into lobes or segments



**Calculate** tumor-to-normal ratio



**Calculate** liver-lung shunt fraction



**Multi-modality** rigid and deformable fusion



**Post-op dosimetry** for Y90-PET and Bremsstrahlung SPECT



**Integrated** reporting tools



**RECIST and PERCIST** tools

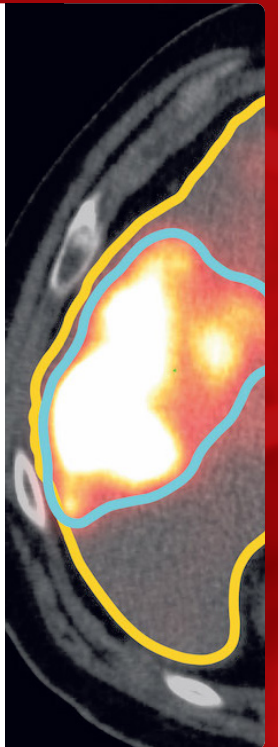


**Customizable** physician and staff workflows

### Pre-Treatment

MIM SurePlan LiverY90 provides timesaving tools for liver and tumor volume segmentation, deformable registration, and comparison between pre-treatment images and post-treatment dosimetry.

- **Automatically generate liver volumes** using Contour ProtégéAI™.
  - Minimal to no edits needed, zero click, automatically runs for each new patient CT.
- Easily divide liver into **lobes or segments** to determine target region volumes.
- Rapidly generate **tumor contours** based on any combination of CT/MRI/CBCT/PET/SPECT, using specialized semi-automatic tools.
- Calculate **tumor-to-normal ratio** for both your total tumor volume and individual tumors.
- Planar and SPECT/CT lung shunt calculations.
- Incorporate multiple modalities with rigid and deformable registration.

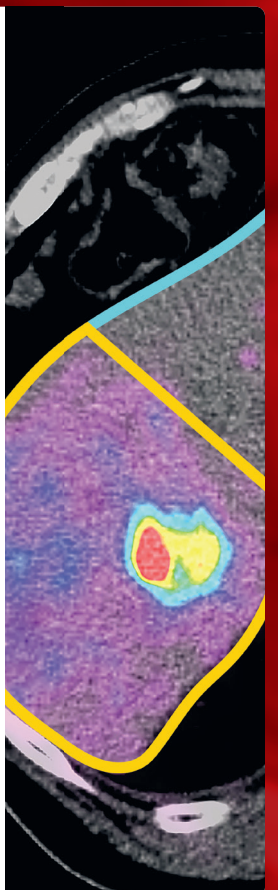


### Post-Y90 Dosimetry

SurePlan provides tools for Yttrium-90 microsphere post-treatment voxel-based dose calculation using PET and SPECT.\*

Delivered dose can be compared to follow-up exams with automated tools for therapy response evaluation. The resulting treatment information can then be incorporated into the patient record.

- Dose calculation on both **Y90-PET and Bremsstrahlung SPECT**.
- **Vendor-neutral** dose calculation, resin, and glass.
- Calculate dose using Voxel S Value Kernel Methods, Local Deposition Method, and Local Deposition Method with known activity (SPECT/CT).
- **Combine Y90 dose** with dose from other treatments such as **external beam** radiation therapy.
- Automate therapy response assessment.
- Create information-rich reports with dosimetry and therapy response information.
- Provide **immediate information** for earlier follow-up treatment decisions.



\*According to the EANM dosimetry committee series on standard operational procedures from 2021 "Voxel dosimetry is recommended to complement the mean dose approach."



## Global Offices



### MIM SOFTWARE INC.

World Headquarters

25800 Science Park Drive,  
Suite 180  
Cleveland, OH 44122

PHONE: 866-421-2536  
(US/Canada toll-free)

PHONE: 216-455-0600

FAX: 216-455-0601

EMAIL: [info@mimsoftware.com](mailto:info@mimsoftware.com)

### MIM SOFTWARE

Beijing Co., Ltd.

Suite 809, Shouxiang  
Science Building  
No.51 Xueyuan Rd.,  
Haidian District  
Beijing 100191

北京明维视景医疗软件开发有限公司  
地址: 北京市海淀区学院路51号首享科技  
大厦809室  
邮编100191

PHONE: 86-10-82626960

EMAIL: [info@mimsoftware.com](mailto:info@mimsoftware.com)



### MIM SOFTWARE

Brussels BVBA

Drukpersstraat 4  
1000 Brussel  
Belgium

---

MIM Software is also represented globally by a network of well-established distributors and agents. Please contact your local MIM Software representative to obtain more information for your region.

---

© MIM Software Inc.  
2023 All Rights Reserved

TD-1212  
09 Oct 2023



**Emergo Europe**  
Westervoortsedijk 60  
6827 AT Arnhem  
The Netherlands



**MedEnvoy Switzerland**  
Gotthardstrasse 28  
6302 Zug  
Switzerland

